

# PYSA President's Meeting

February 15, 2011



# Agenda

## Presidents Welcome

- Survey & Outreach Results
- PYSA Committees Update

## Spring League Registration Update

## Proposal & Discussion on Smaller Sided Teams

## Budget Update

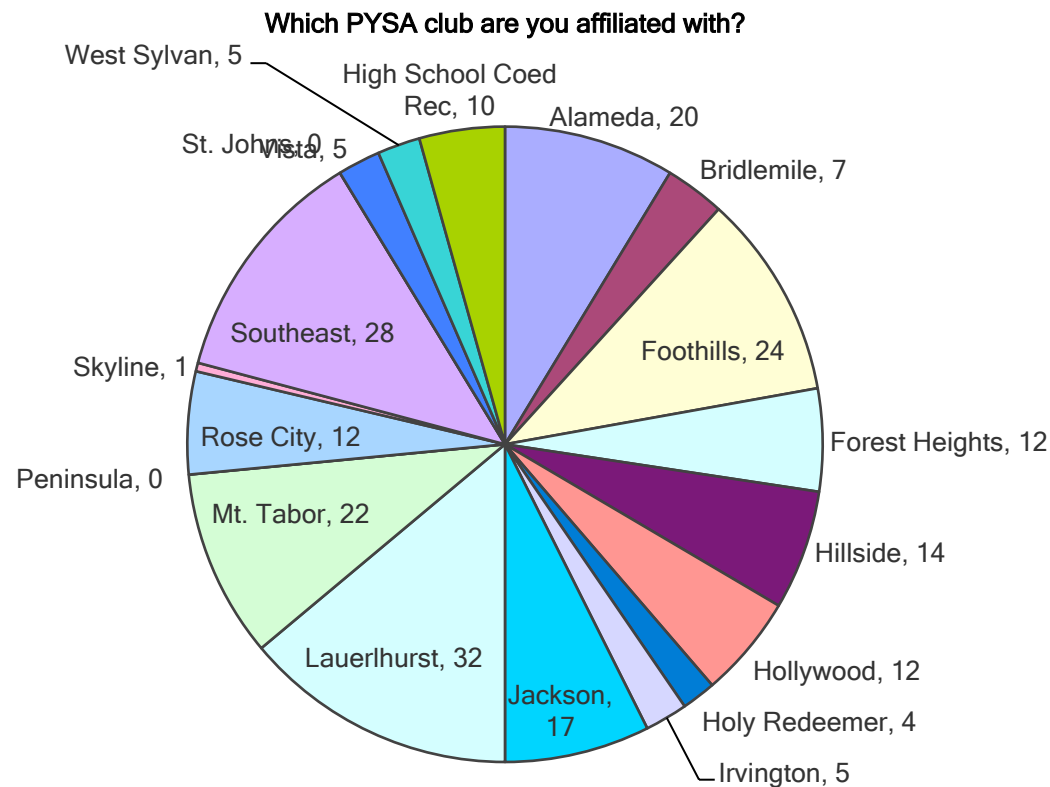
## Proposal & Discussion on OYSA Proposal

## Meeting Adjourned



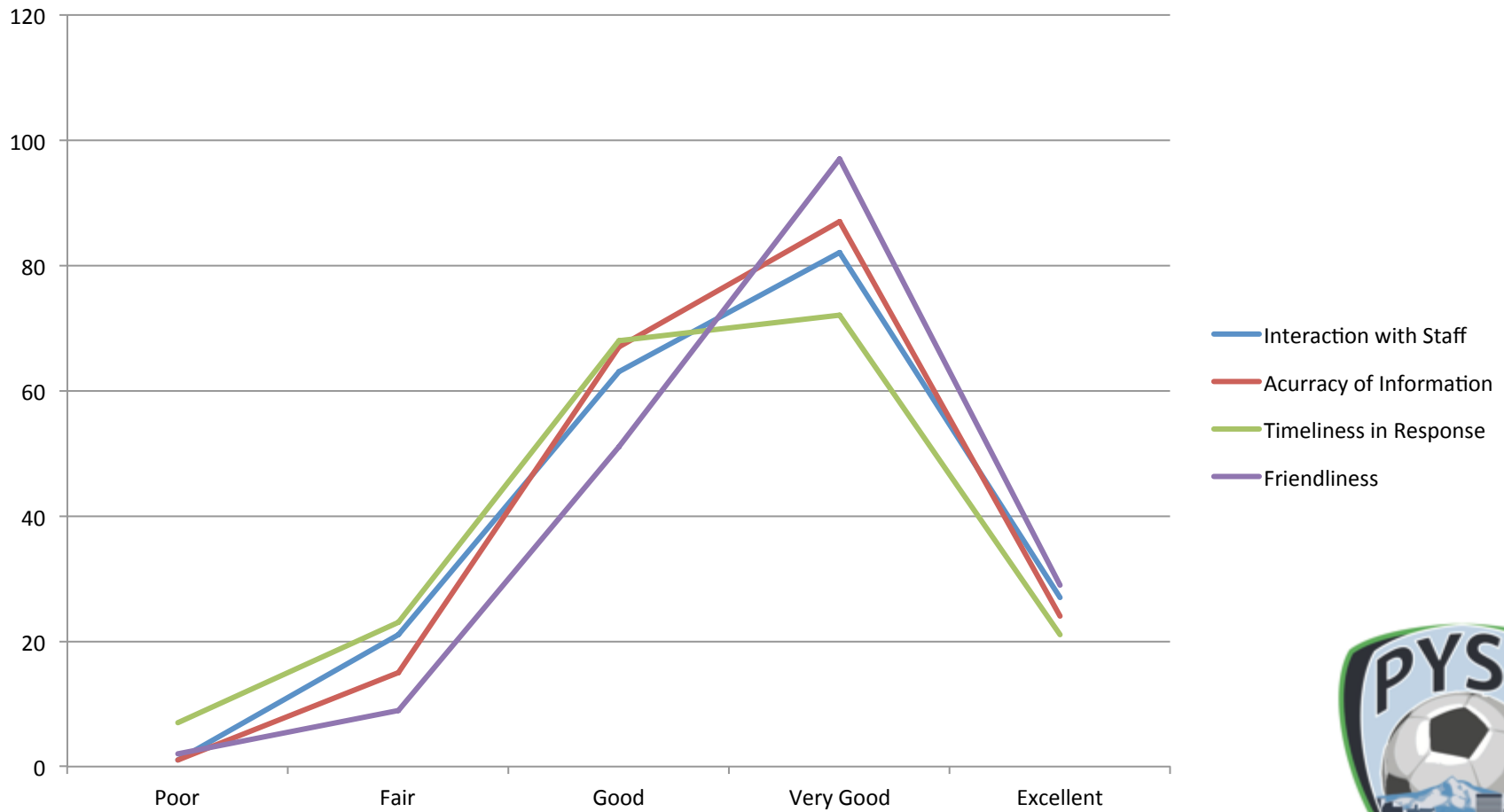
# 2010 Survey Results

- 221 Coaches
  - 230 people responded in total
  - Parents, Referees, Registrars and Club Board Members

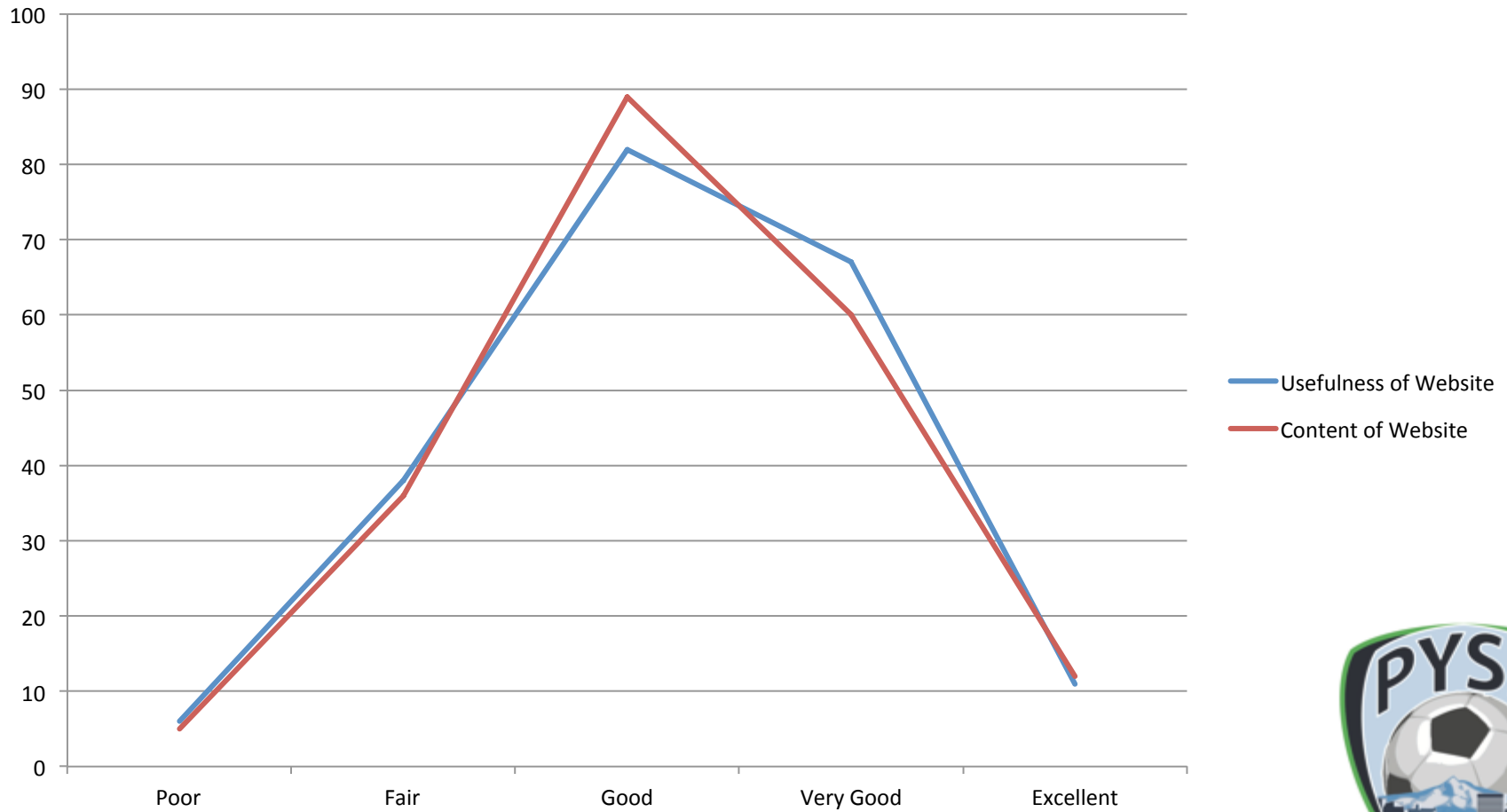


# Interaction with the Staff

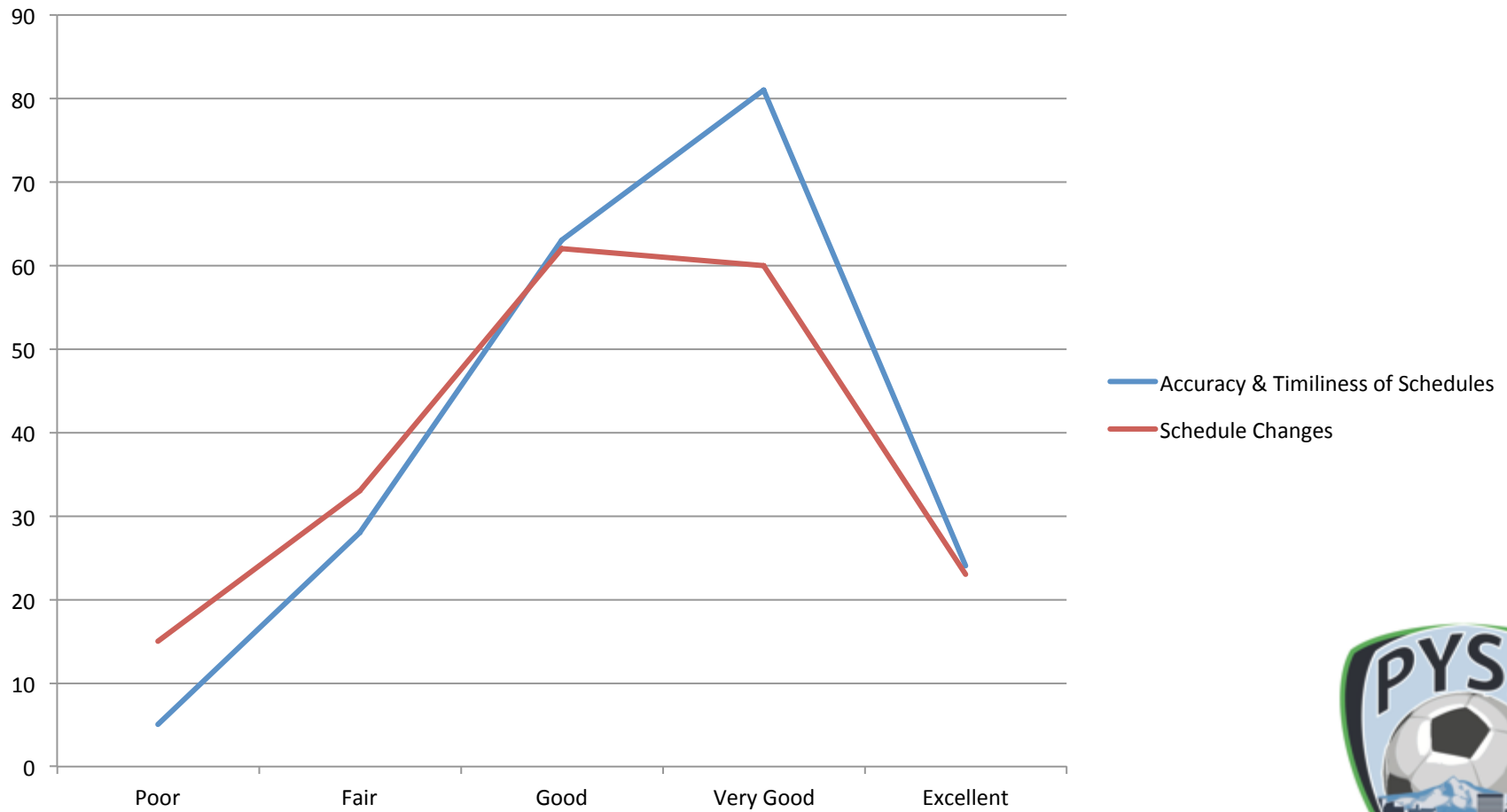
94% Email, 14% Phone Calls



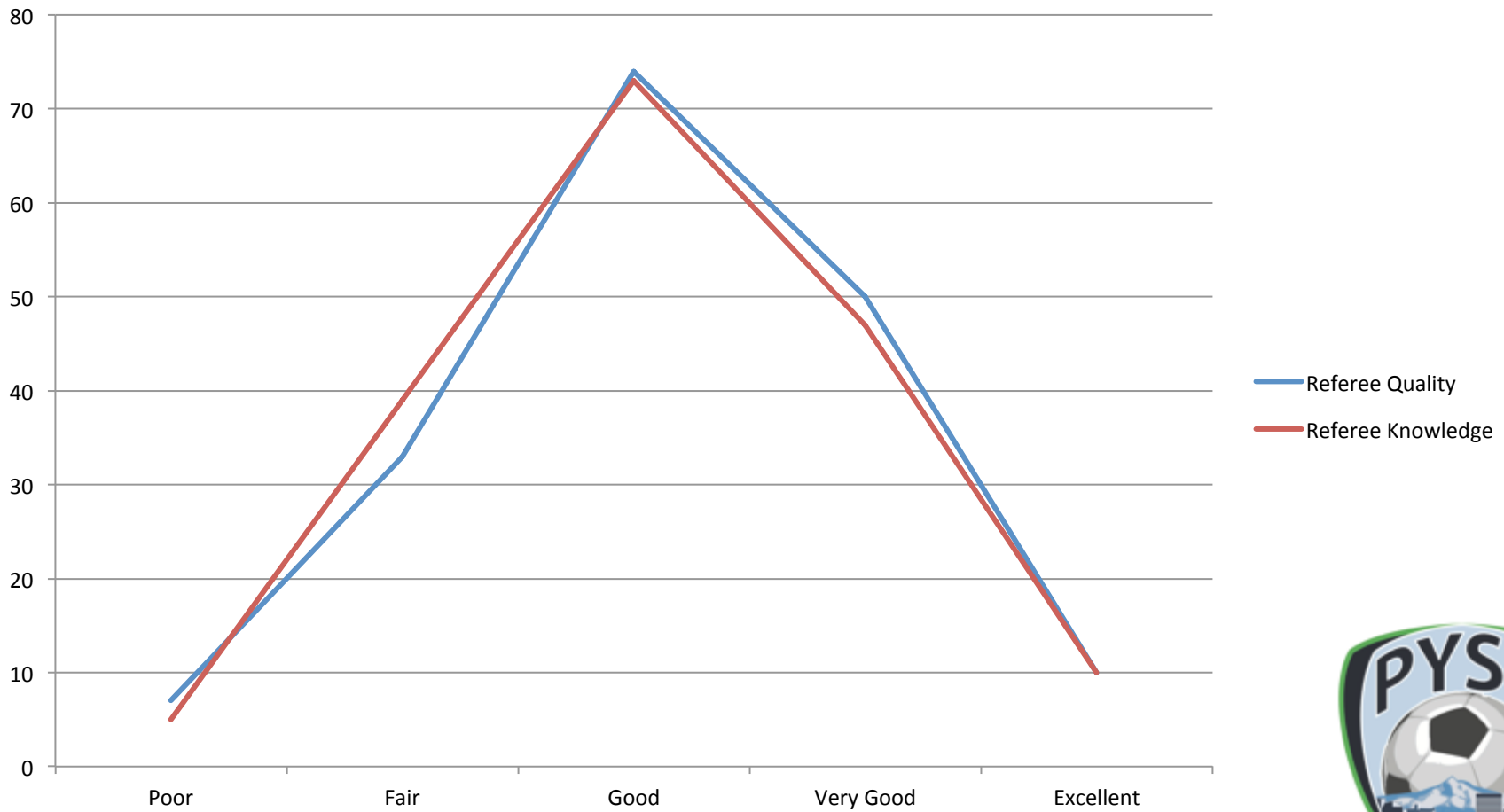
# PYSA Website



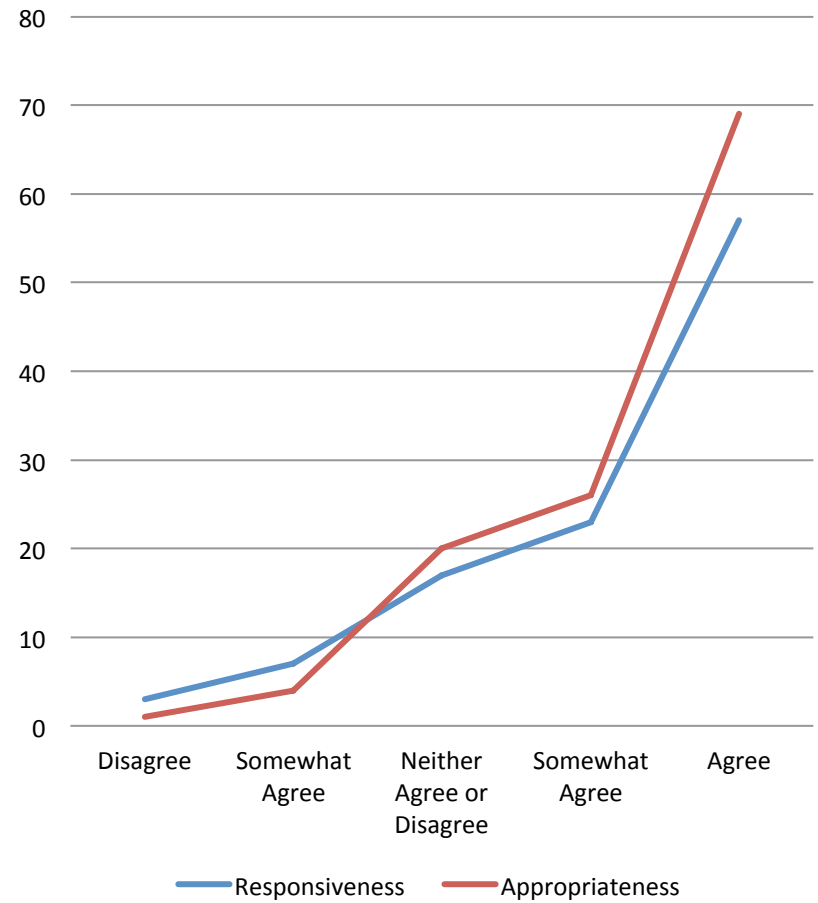
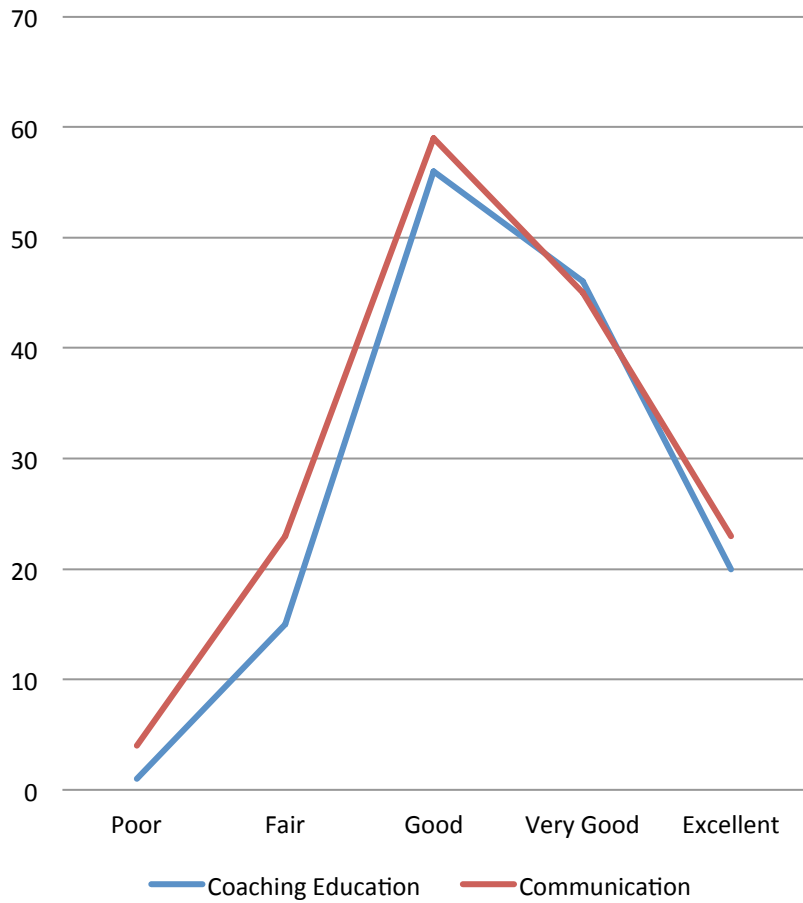
# Schedules



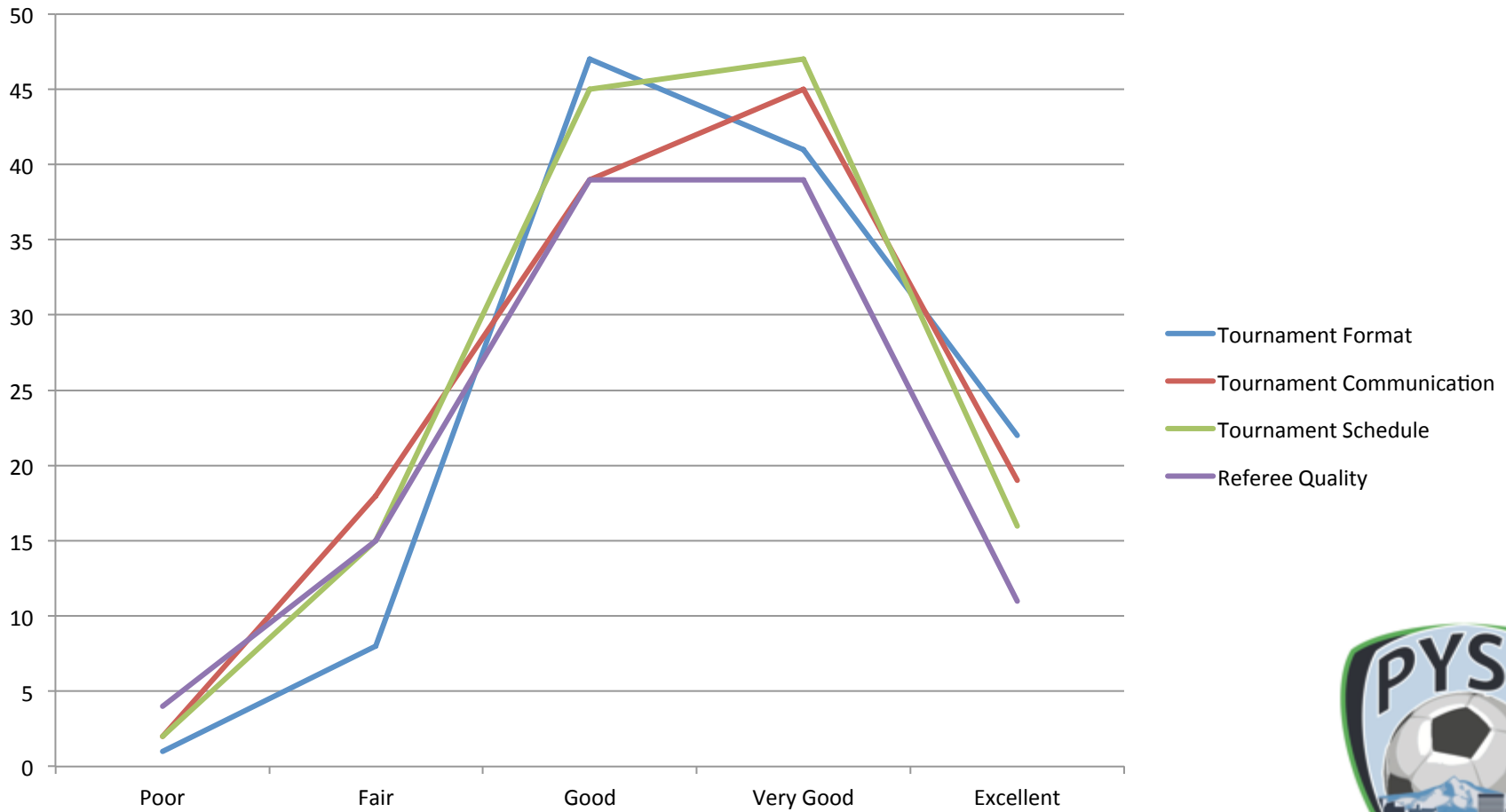
# Referees



# Coaching Education



# PYSA Tournament



# Lots of Comments...

- “We had a very difficult situation this past fall - 25 eleven year old girls. Both Nelson and Tim were instrumental in making sure our kids had a successful season. As a result, we are getting huge accolades from our parent and the girls are signing up in record numbers for anything to do with soccer.”
- “I thought the quality of referees for the fall season HS rec was the worst I have seen in my 13 years of coaching. The refs don't care, don't make calls. It seems like they show up to pick up a paycheck. I had a number of incidents where there was rough play and had players injured right in front of a referee and there was not call.”
- *Lots of additional comments that we are still sorting through...*



# Club President's Outreach

## Meetings to Date

- Hillside Soccer Club
- Holy Redeemer Soccer Club
- Lauralhurst Soccer Club
- Mt. Tabor Soccer Club
- Southeast Soccer Club
- St John's Soccer Club
- West Sylvan Soccer Club

## Common Themes

- Referee Issues
- Field Development
- Confusion About Structure of Youth Soccer
- Enforcement of Rosters
- Blowout Policy
- Positive Comments for Online Scheduling & Coaches Education



# PYSA Committees

- **Disciplinary Committee**

- To assist the Board and staff in the creation and implementation of a policy for conduct among players, coaches, and spectators at PYSA-sponsored games.
- Vina, Roger and Greg

- **Competition Committee**

- To develop a system to rank teams in order to make the PYSA leagues more enjoyable for association members.
- Paolo and John

- **Field Committee**

- To handles matching fund requests, field development, and practice field allocations.
- Tim, Greg and Jeff

- **Registration Committee**

- To provide recommendations to the Board regarding registration programs and procedures.
- Nelson and Amy

- **Outreach Committee**

- To provide guidance to the Board and staff on how to most effectively reach areas of Portland that are not currently being served by PYSA.
- Jeff and Sean

- **Scholarship Committee**

- To assist the Board in the development and implementation of a scholarship policy.
- Dan and Rick



# Fields Update

- Recent Grants for Turf Fields
  - Buckman Field... \$10,000
  - Forest Park... \$10,000
- 2010 Matching Funds (\$1,800)
  - Laurelhurst Soccer Club
  - Hillside Soccer Club
  - Forest Heights Soccer Club



# Spring League Registration



# Small Sided Teams



# PYSA Financials

	2009-2010 Actuals	2010-2011 Budget	Jul-Dec 2010 Actuals
Income	\$429,735	\$423,500	\$318,300
Expenses	\$431,514	\$427,744	\$229,596
Net Income	(\$1,779)	(\$4,244)	\$88,704

**Total Assets as of Dec 31, 2010**

**\$254,459.11**



# OYSA Discussion

- Why PYSA originally left OYSA
- What has changed since PYSA left
- Latest proposal from OYSA
- Other Factors...



# Why PYSA Left OYSA

- Desire to create a Director of Coaching Position to address coach
- Simplify the registration process
  - OYSA's new online registration system had issues
- PYSA was not getting a good value
  - \$13 per player for rec league
  - Sub-par responsiveness and attitudes



# What Has Changed

- \$13 to \$9
  - Last year OYSA offered \$13 with rebates...
  - The latest offer is a fixed \$9 per player rate
- PYSA will manage registrations
  - Background checks will follow the same process, but hits will be routed to OYSA
- PYSA will manage the coaching education
  - OYSA will augment PYSA's coaching education resources



# Additional Factors...

- **Referee Pool**
  - PYSA has a referee pool of ~165 refs, whereas OYSA's accessible referee pool in the Portland Area is ~1,200
  - PYSA will be in a better position to pick & choose
- **Access to OYSA and US Club Sanctioned Events**
  - Extremely complicated for clubs to participate today
  - Tournaments and ODP (Olympic Development Portland)
- **All PYSA Clinics would be sanctioned by US Soccer**
  - Ability to host state and national level courses
- **Youth Soccer in the Portland Area**
  - A strong endorsement from PYSA would avoid further fragmentation



# The Latest Offer

- \$9 per player
- \$13 per coach
- Access to OYSA State Instructional Staff based on Available (~20 in the Portland)
- Background checks
- Insurance
  - Member Insurance, General Liability, Club BoD, Member Accident, Field Insurance



# Costs

	Independent PYSA	PYSA - OYSA
Bollinger Premium	\$51,613	---
CRIS	\$4189	---
Attorney Background Checks	<i>Variable Costs</i>	---
Coaching Education	\$1782	---
OYSA Player Fees ( <i>8,362 players</i> )	---	\$75,258
OYSA Coach Fees ( <i>1,131 coaches</i> )	---	\$14,703
<b>Totals</b>	<b>\$57,583</b>	<b>\$89,961</b>
Per Member Fees	\$6.07	\$9.51



# Discussion

- No fee increases for the coming year...
- Is this a good use of \$30k?

